

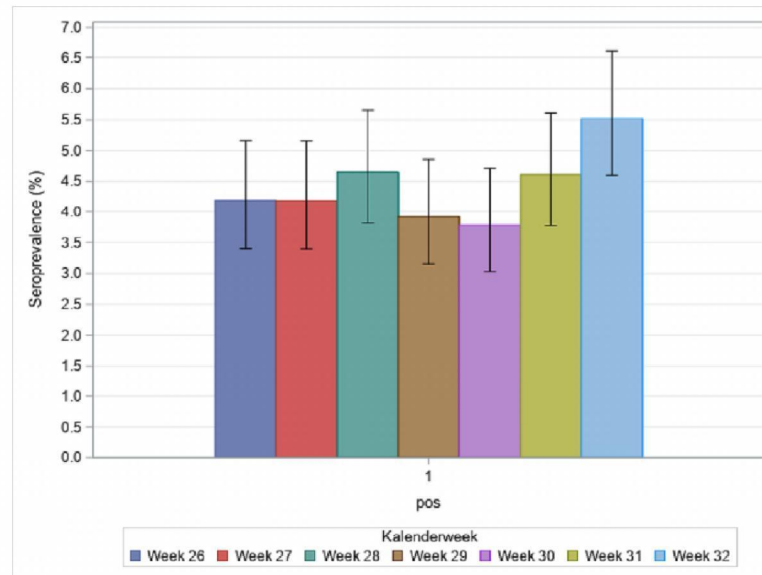
Sanquin Donor Serology data SARS-CoV-2 – Calendar weeks 26-32 (June 22 – Aug 6)

Analyzed by 5.1.2e

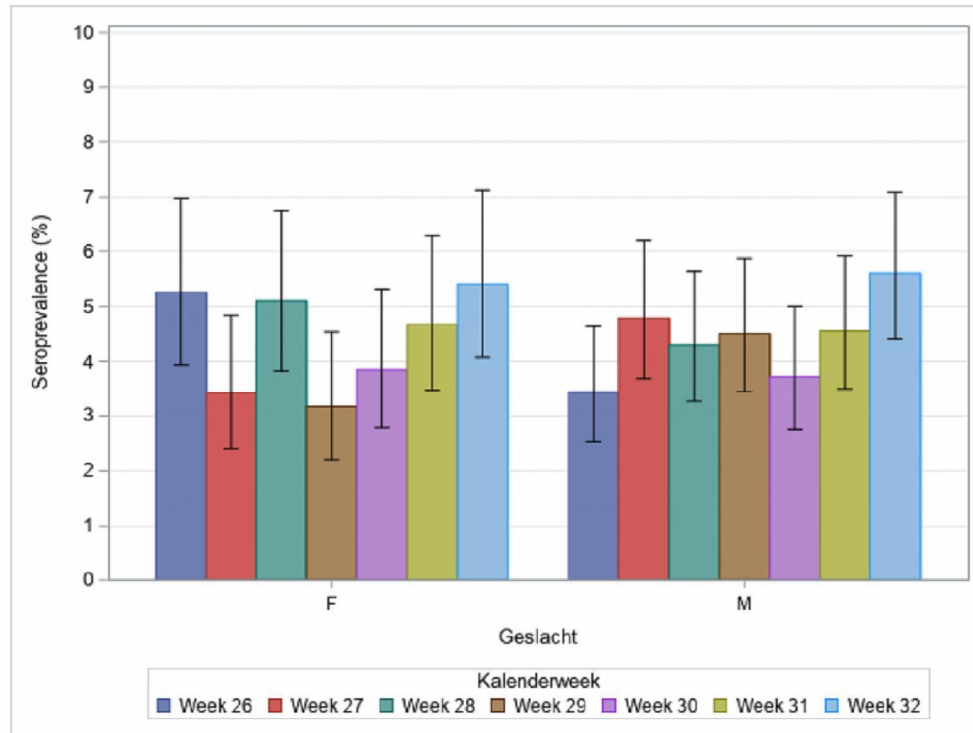
Seroprevalence, by week

Note. The estimates provided are crude rates of Dutch donors in the age range 18-79 years who are cross-sectionally included by week. These data are unweighted, not corrected for the survey design or for test specifics (like in Pienter-Corona); hence, they do not represent the Dutch population and may fluctuate per week.

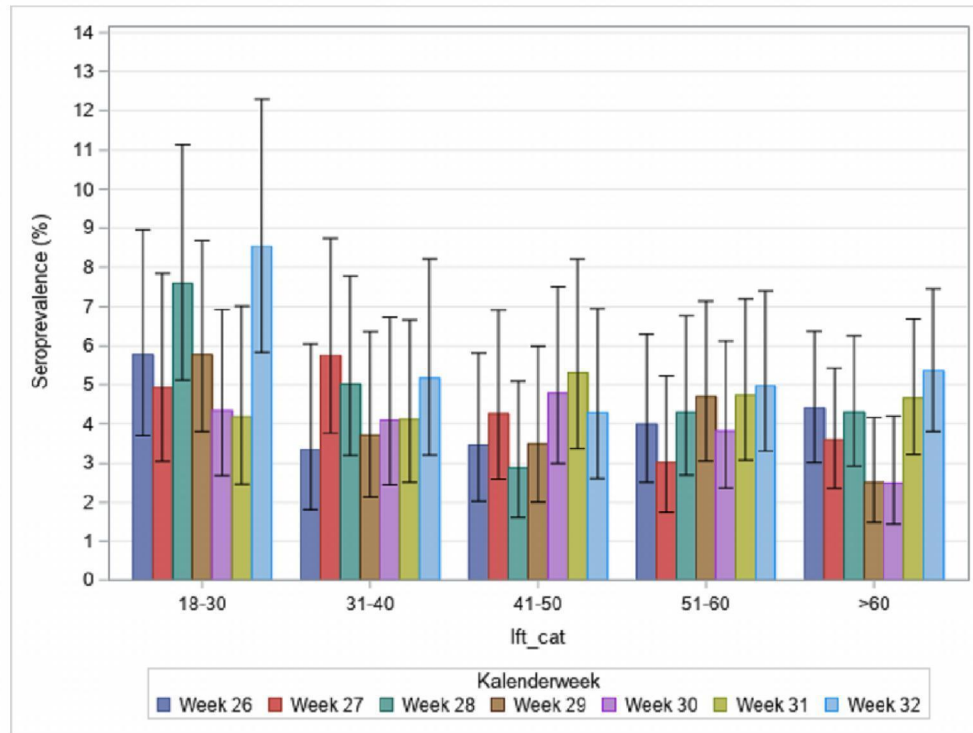
Overall



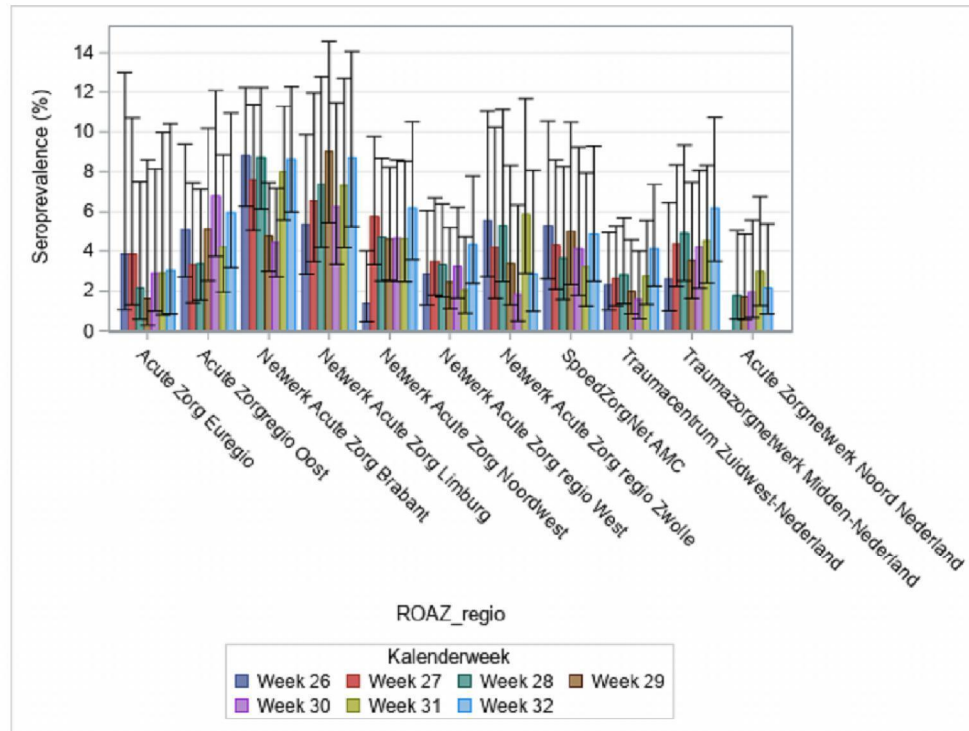
Sex



Age groups

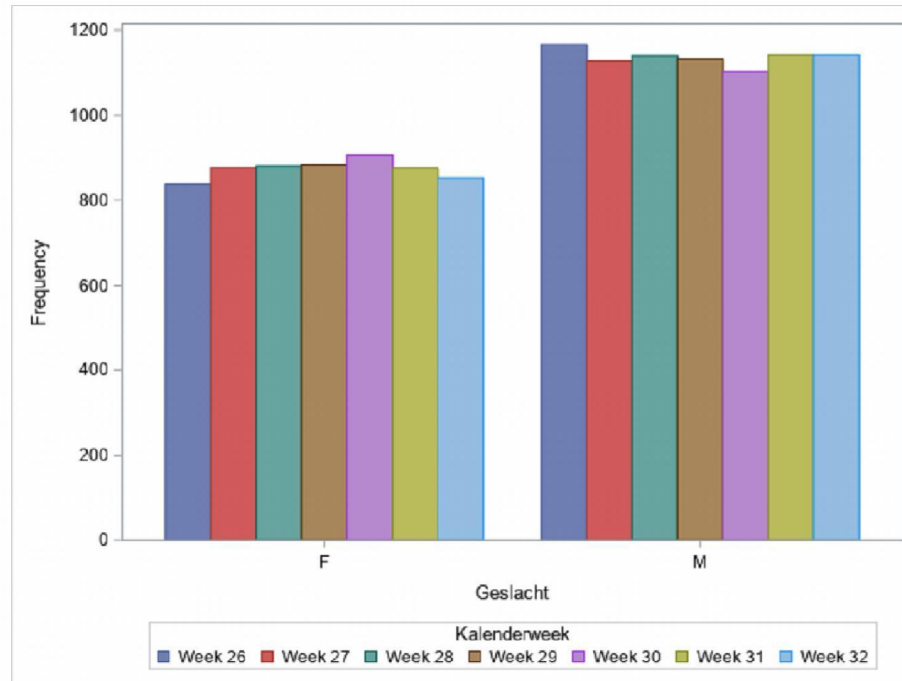


ROAZ_region

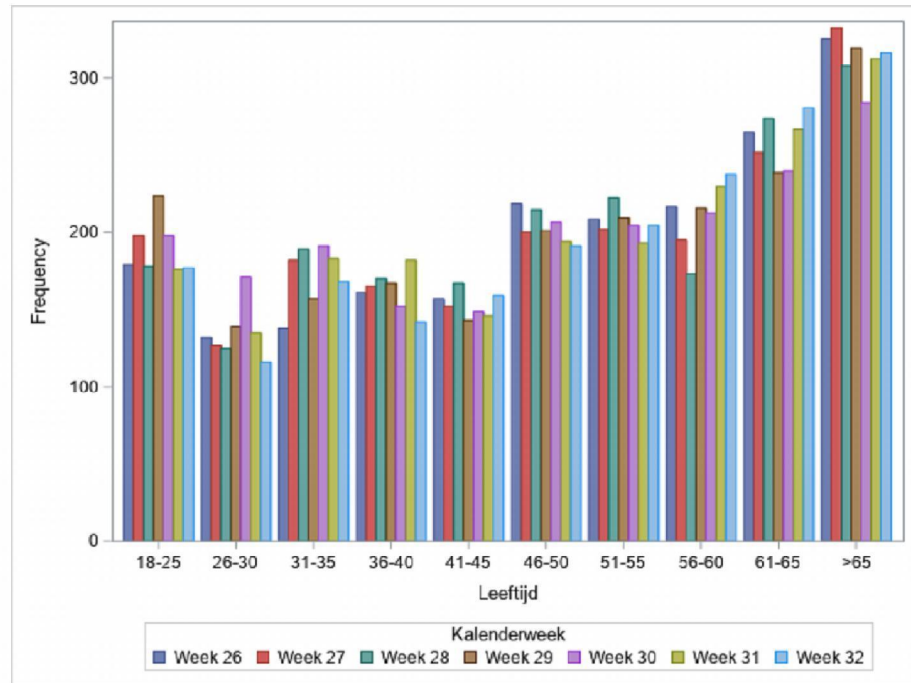


Descriptives of included donors, by week

Sex



Age groups



ROAZ regions

